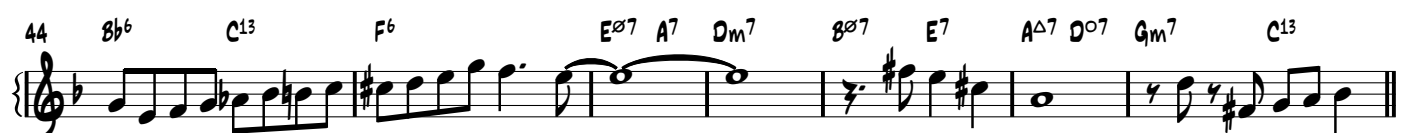


# IF I WERE A BELL - MILES DAVIS QUINTET 1958 TRANSCRIPTION

MILES

♩ = 180  
SWING



2



111 G<sup>9</sup> C<sup>13</sup> FΔ<sup>7</sup> A<sup>ø</sup><sup>7</sup>

3 3 3 3

The musical notation for measures 111-115 is as follows:

- Measure 111: Treble clef, key signature of one flat (Bb), 4/4 time. Chord G<sup>9</sup>. Notes: G4 (quarter), A4 (quarter), Bb4 (quarter), G4 (quarter).
- Measure 112: Chord C<sup>13</sup>. Notes: C5 (quarter), D5 (quarter), Eb5 (quarter), C5 (quarter).
- Measure 113: Chord FΔ<sup>7</sup>. Notes: F4 (quarter), G4 (quarter), A4 (quarter), F4 (quarter).
- Measure 114: Chord A<sup>ø</sup><sup>7</sup>. Notes: A4 (quarter), Bb4 (quarter), C5 (quarter), A4 (quarter).
- Measure 115: Chord A<sup>ø</sup><sup>7</sup>. Notes: A4 (quarter), Bb4 (quarter), C5 (quarter), A4 (quarter).

116 D7 3 G7 Gm7 C13 F6 F7/A 3 Bb6 C13

[illegible]

127  $G^9$   $C^{13}$   $F\Delta 7$   $A^{\flat 7}$   $D^7$

133 G<sup>7</sup> G<sup>m</sup>7 C<sup>13</sup> F<sup>6</sup> F<sup>7</sup>/A 3 B<sup>b</sup>6 B<sup>o</sup>7 F<sup>6</sup>/C B<sup>b</sup>13

138  $A\flat 7$   $D7$   $Gm7$   $C^{13}$   $Bbm^9$   $E\flat^{13}$

143 Gm7 C7 FΔ7 Aø7 D7 Gm7

148

153 FΔ7 Aø7 D7 Gm7 C7 FΔ7

158  $A\Delta^7$   $D^7$   $Gm^7$   $C^7$   $F\Delta^7$   $\%$